

Your Place to  
Flourish



PARTERRE

# DELIGHTFULLY DIFFERENT AND FULL OF

# *Life!*

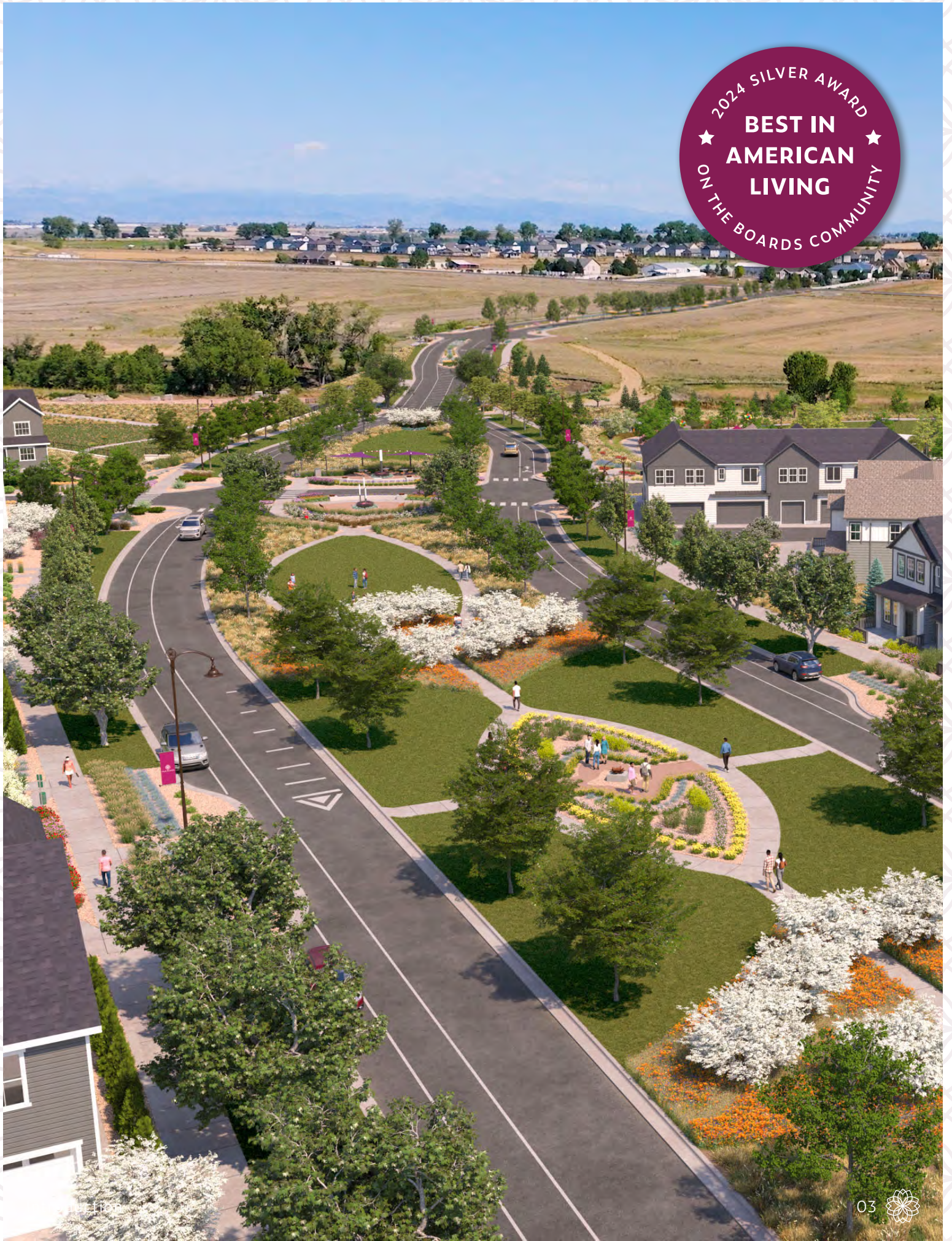
## A BLOSSOMING NEW COMMUNITY

Created to inspire and designed to stand apart, Parterre plants the seeds for something truly special in the city of Thornton, CO—A place where people can grow and prosper alongside one another in a setting that is as vivid as it is inviting.

Far from the typical residential development, Parterre is a playful garden that awakens the senses and activates the imagination—A community where life's most memorable moments are always in bloom.

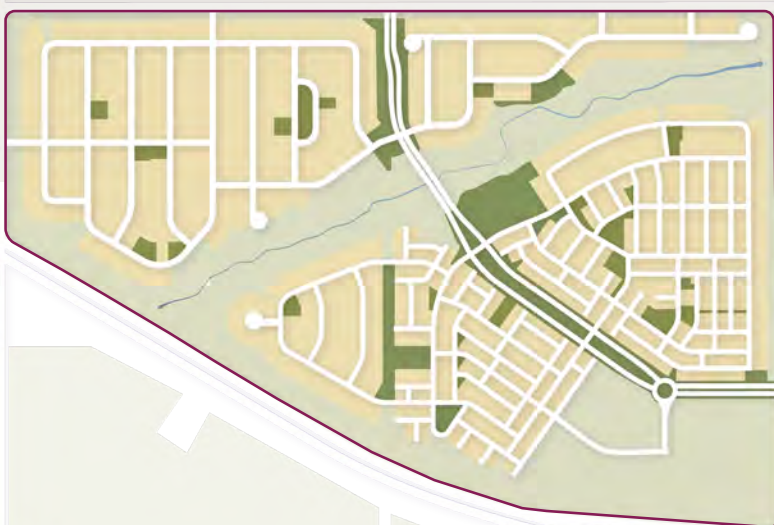


2024 SILVER AWARD  
★ BEST IN AMERICAN LIVING ★  
ON THE BOARDS COMMUNITY



# 5 INVITING NEIGHBORHOODS

Rooted in the same expressive spirit, each of Parterre's five garden-inspired neighborhoods bring their own unique character to the larger community.



## GARDEN NORTH

Development begins with Garden North, the largest of Parterre's neighborhoods. It features 22 parks, trail access, and green spaces beautifully distributed across the landscape.



## ARBOR WEST



## THE BLOOM



## TERRACE EAST



## SOUTH VERANDA

Visit us at [LiveParterre.com](http://LiveParterre.com) to view the detailed lot map!



## AMENITIES THAT ACTIVATE THE SENSES

We believe everyone deserves a beautiful place to prosper surrounded by imaginative parks, delightful patterns, and colorful surprises that come to life across all four seasons. Every detail within Parterre is thoughtfully crafted to inspire joy, soothe the soul, and set the foundation for life to flourish.

An intertwined network of streetscapes, trails, parks, and inviting front porches welcome everyone to experience our shared community in their own way.



*Dozens of parks  
& miles of trails!*



# UNIQUE HOMES. EXPRESSIVE PARKS. VIBRANT COMMUNITY.



## NEW HOMES TAKING ROOT

*Part of Parterre's charm is that unique homes and playful parks live together in beautiful harmony.*

Whether you are a first time home buyer, a move-up buyer looking for more space, or somewhere in between, Parterre has something for everyone. Our trusted homebuilders have created a unique collection of floor plans and styles designed to suit your needs, whatever they maybe. Each one, a vivid reflection of a life in bloom.



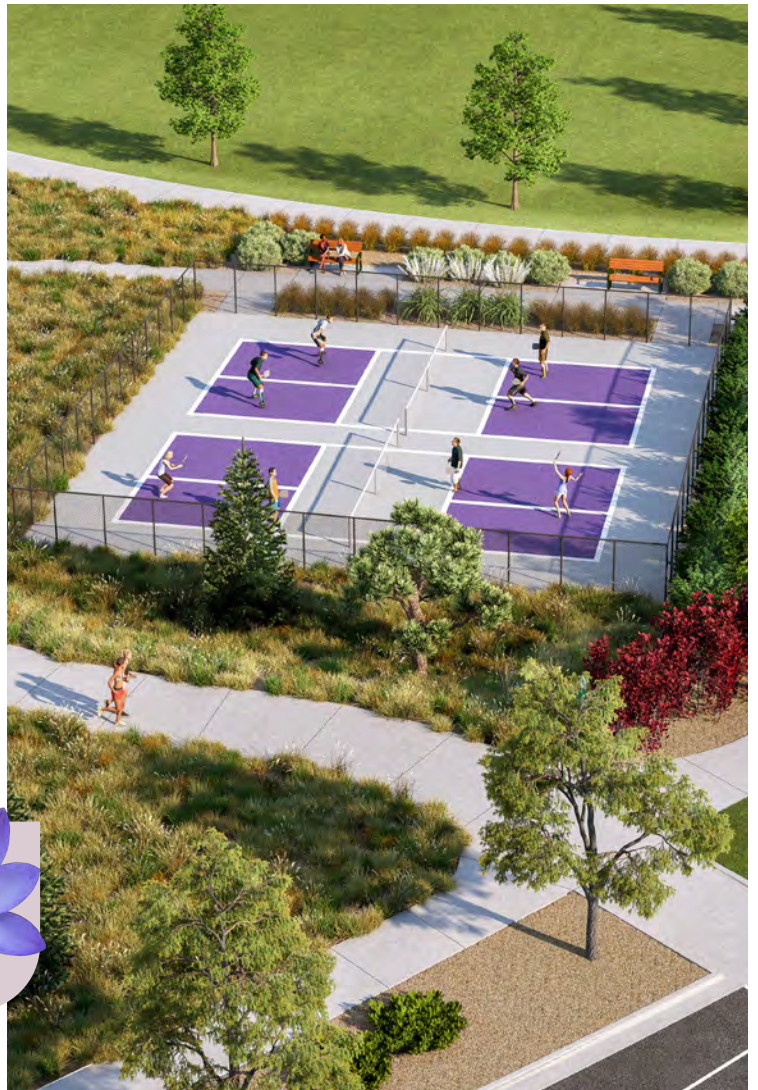


## GET TO KNOW GARDEN NORTH.

### PARTERRE'S FIRST NEIGHBORHOOD

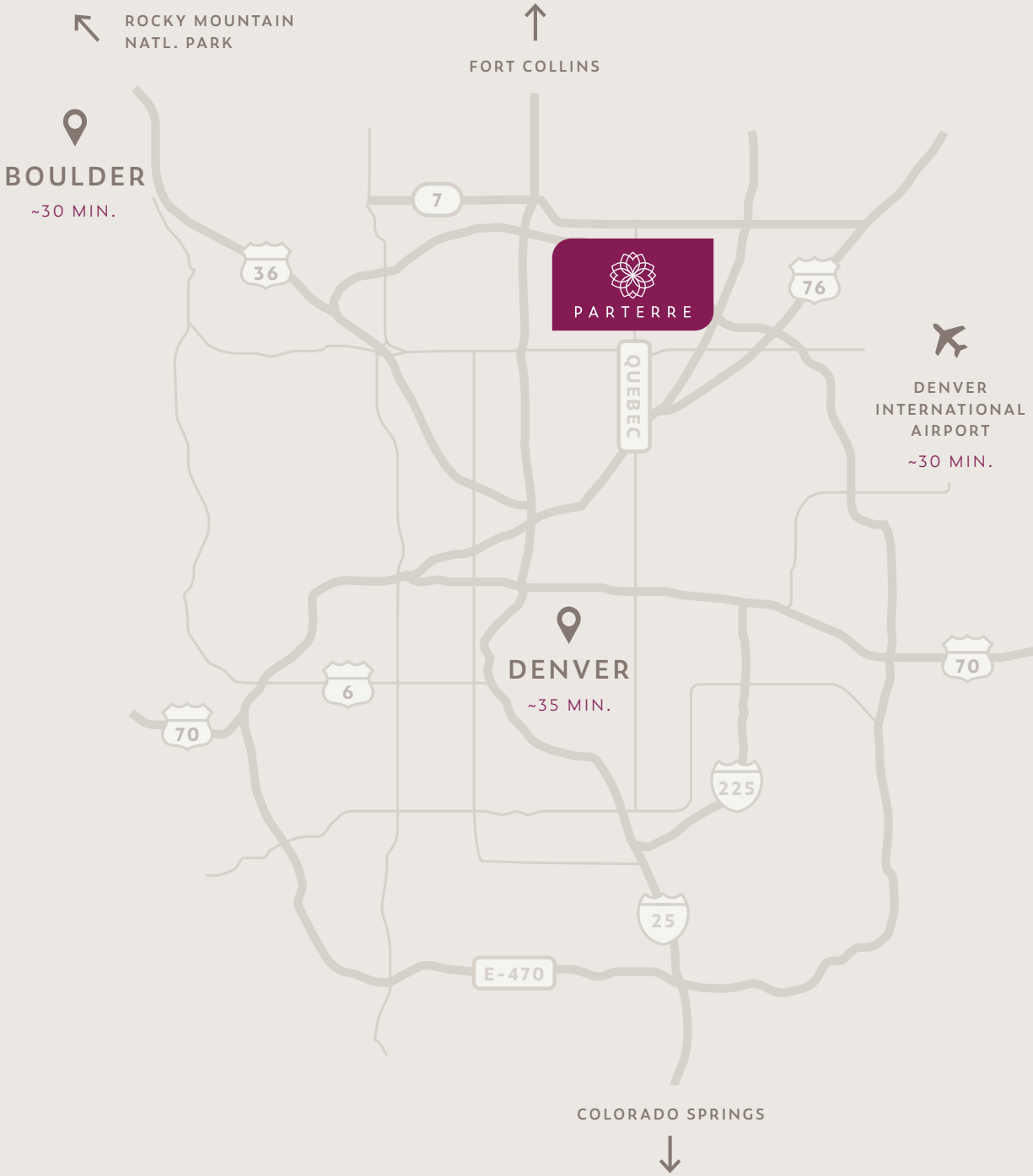
This delightful neighborhood will have 22 imaginative parks, a community garden, a central green, pickleball courts, and a lively recreation center. Garden North sets the stage for Parterre's grand vision and will welcome residents starting in the Spring of 2025.

*Come visit us today and experience the latest models sprouting up from renowned home builders, Taylor Morrison and Lennar.*



EVERYTHING YOU NEED,

*Close at hand.*







## SCHOOLS

Top-rated schools in district 27J, like Riverdale Ridge, West Ridge Elementary, and Quist Middle School, make it easy for your kids to learn and grow.

## RECREATION

A view of the mountains, miles of trails, dozens of parks, a recreation center, and an abundance of fun come to life in and around Parterre.



## SHOPPING

The Orchard Town Center, the Denver Premium Outlets, and easy access to E-470, make living at Parterre exceptionally convenient.

## DINING

Local restaurants, family favorites, and fresh new finds are a short drive away with even more options emerging every day.



## WORKSPACES

With easy access to employment opportunities throughout the Metro area, Parterre is close to the office, wherever that may be.

# PICK YOUR UNIQUE *New Home*

The best homes are the ones that fit beautifully into your lifestyle. Parterre was created with this belief in mind, bringing builders into the neighborhood that can offer a vibrant mix of

options to choose from. Whether you're looking for a single family home, a paired home, or a townhome, you'll be sure to find the one that helps you grow and makes you smile.



## **HORIZON COLLECTION | \$500s** 1,606-2,989 SQFT.

Meet the Horizon Collection of single-family homes with up to 5 bedrooms, modern exteriors, loft, study, and basement options, plus a low-maintenance lifestyle.



## **WESTERLY COLLECTION | \$400s** 1,248-1,613 SQFT.

Meet the Westerly Collection of modern Townhomes with up to 3 bedrooms, modern exteriors, attached 2-car garages, and a lock and leave lifestyle.



# LENNAR®

## SKYLINE COLLECTION | \$600s 1,970-2,209 SQFT.

The Skyline Collection presents four unique three-story designs with three to four bedrooms and either two and one-half bathrooms or three and one-half bathrooms.



## PAIRED COLLECTION | \$500s 1,803-2,216 SQFT.

The Paired Collection presents four unique two-story designs with three bedrooms and two and one-half bathrooms.



## PARKSIDE COLLECTION | \$400s 1,099-1,617 SQFT.

The Parkside Collection presents four unique two-story townhomes with two to three bedrooms and two to two and one-half bathrooms.





# P A R T E R R E



14885 Arbor Blvd West  
Thornton, CO 80602

(303)647-3860

Mon, Tues: 10am-5pm  
Wed: 1pm-5pm  
Thur, Sat: 10am-5pm  
Sun: 11am-5pm



6649 Juniper Drive  
Thornton, CO 80602

(303)900-3550

Mon-Thur: 9am-5pm  
Fri: 12pm-5pm  
Sat: 9am-5pm  
Sun: 11am-5pm

*Visit us online for up-to-date business hours as they may be subject to change.*

*Community maps, illustrations, lotting plans, tracts, landscaping and/or amenities depicted on this site reflect an overall conceptual vision for the Community, but final plans may vary. Any photographs, illustrations, or renderings reflect the artist's vision and are provided for illustrative purposes only. These materials are not final technical or legal documents and are subject to change without notice. Maps not to scale.*

For more details, visit us online at [LiveParterre.com](https://www.LiveParterre.com), or reach out directly at [hello@liveparterre.com](mailto:hello@liveparterre.com).